



Design out the box



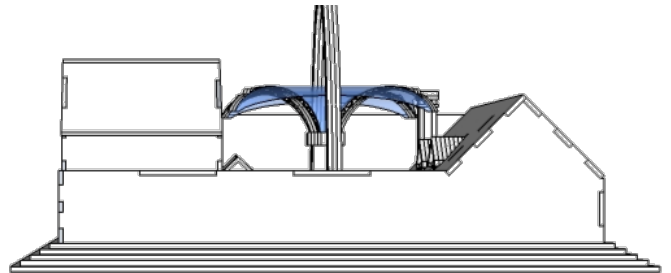
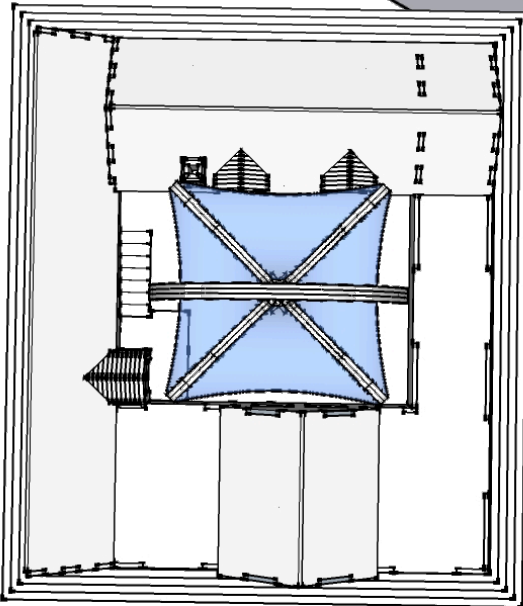
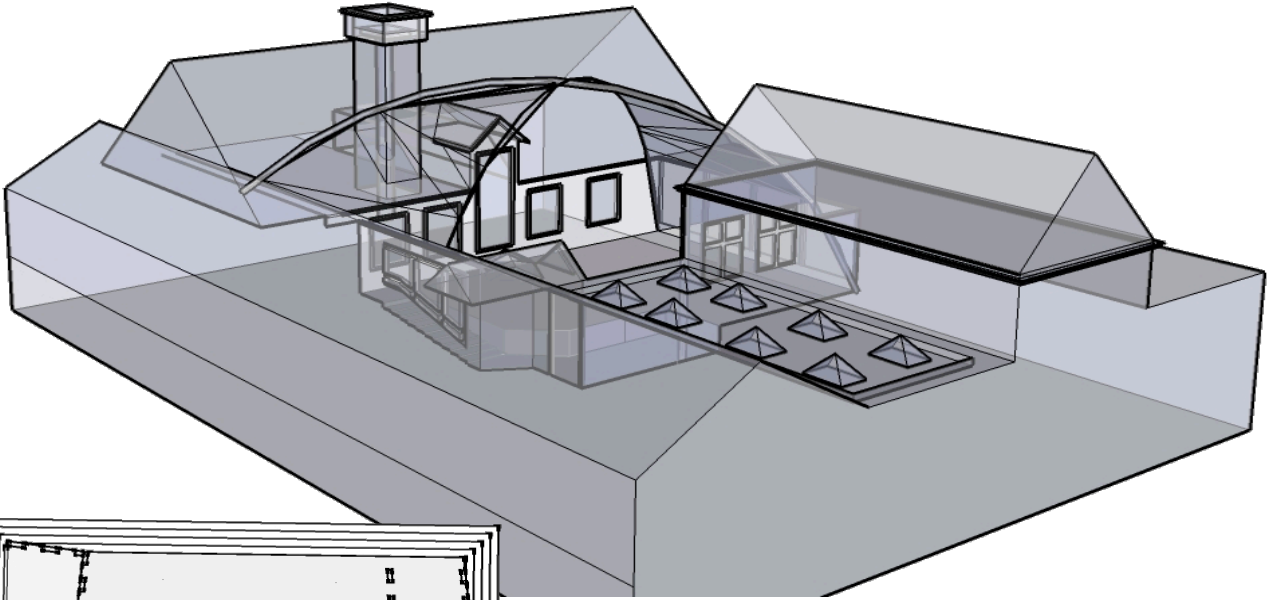
Wasted Space

CONTEXT

The local education authority want to utilize the expensive ground the school has to extend the facilities and the classrooms of the school. The only issue is that it uses up outdoor space students use for breaks and lunch.

DESIGN TASK

The council is after students designs to turn the rooftop space of the school into student space and are after design proposals. They have provided a map of the space students will have on the roof as well as visuals and have asked for designs and annotation to be placed on this.



Retractable fabric roof that provides shelter in sun and rain and allows the space to become a classroom replacing this outside space. Area between Science and PE.



Wasted Space: Roof

KEY

School Roof Top area

Below is a plan view of the school. The area you have to design is highlighted in white ready for you to design as indicated by the key opposite. Add your designs and add a key using different colours to show different parts of your design.

